

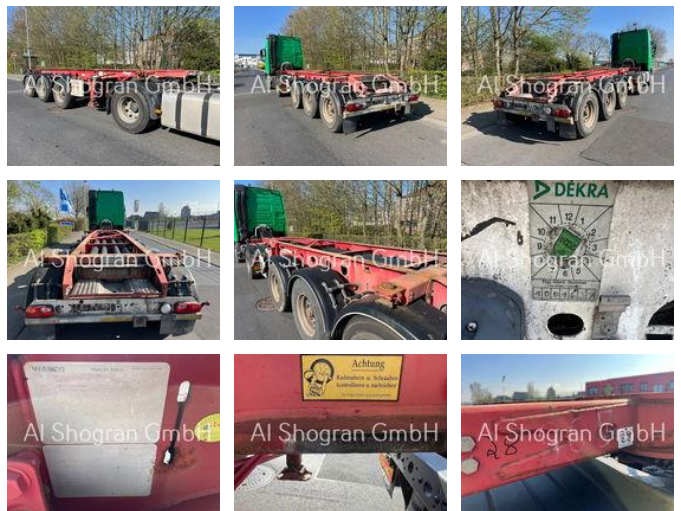
# Al Shogran GmbH

Export & Import LKW Handel

## Fliegl SDS 380/Container/3 x Achse PBW

### General features

Brand	Fliegl
Subcategory	Swap body
Construction year	2011
Date of first registration	10-05-2011
Condition	Used



### Characteristics

Empty weight	3.095kg
GWV	38.000kg
Serial number	WFDFLT33801001637

# Fliegl SDS 380/Container/3 x Achse PBW

## Technical specifications

Number of axes

3

## Description

Fahrzeugnummer: Auflieger 28 Fliegl SDS380 / SDS 380 / Container / 3 x Achse PBW Fgst.Nr.: WFDFLT33801001637 TÜV: HU: 01.2025 - SP: 07.2024 F.1 Technisch Zulässige gesamtmasse in kg: 38.000 G Leergewicht: 3095 Kg PBW Achsen

## Accessories

- 
- 
-