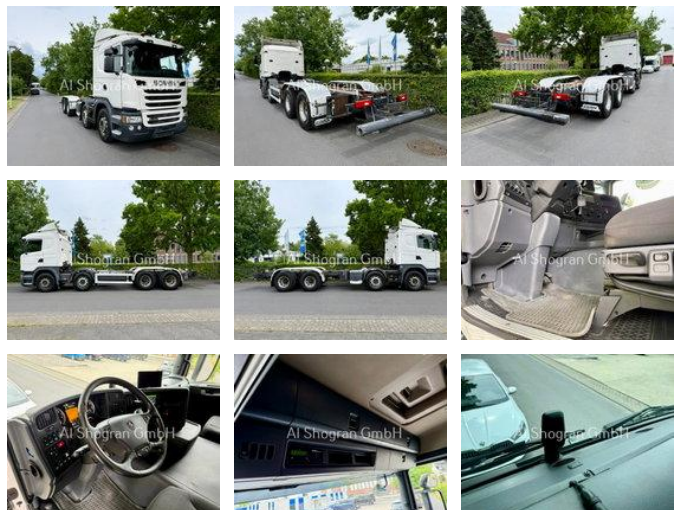


Scania G410 Highline/Retarder/Voll Luft/Eu6

General characteristics

Brand	Scania
Model	G410
Subcategory	Chassis cab
Meter reading	573.774km
Year of construction	2017
Date of first registration	28-10-2017
Colour	Wit
Condition	Used
General state	Good
Fuel	Diesel
Emission class	Euro 6
Reference	123



Properties

GVW	32.000kg
Cabin	Sleeping cabin
Serial number	YS2G8X40009226120

Scania G410 Highline/Retarder/Voll Luft/Eu6

Technical specifications

Number of axes	4
Axis configuration	8x4
Transmission	Automatic
Assets	302kw

Accessories

- Automatic
- Bluetooth
- EBS
- Electric windows
- ESP
- Air conditioning
- Electrically operated windows
- Low-noise
- Fog lights
- Navigation system
- Radio/CD player
- Particulate filter
- Sleeper cab
- Heavy duty engine brake
- Side door
- Electrically adjustable door mirrors
-
- Retarder
- Spoilers
-